

est 1979

 **Jeremy
Leaf & Co.**



Bute Mews, Hampstead Garden Suburb

£4,900 Per Month

- South facing garden
- Garage
- Close to local amenities
- Allocated parking
- Park views
- Unfurnished
- High specification
- Available 10th March

98 High Road, London, N2 9EB
020 8444 5222

eastfinchley@jeremyleaf.co.uk
<https://www.jeremyleaf.co.uk/>

Bute Mews, Hampstead Garden Suburb, NW11 6EQ

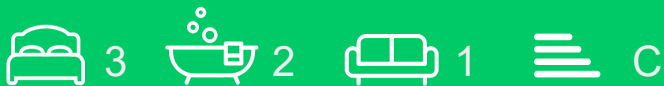
A rare opportunity to rent an UNFURNISHED new build (2nd fill) house in Hampstead Garden Suburb overlooking Fletchers Gardens. A high specification 3 bedroom/ 2 bathroom house with a private south facing terrace, garden overlooking the park and a separate garage.

These unique houses are arranged over three floors including a superb open plan kitchen/ living area with direct garden access and views over the park, separate utility room, allocated parking.

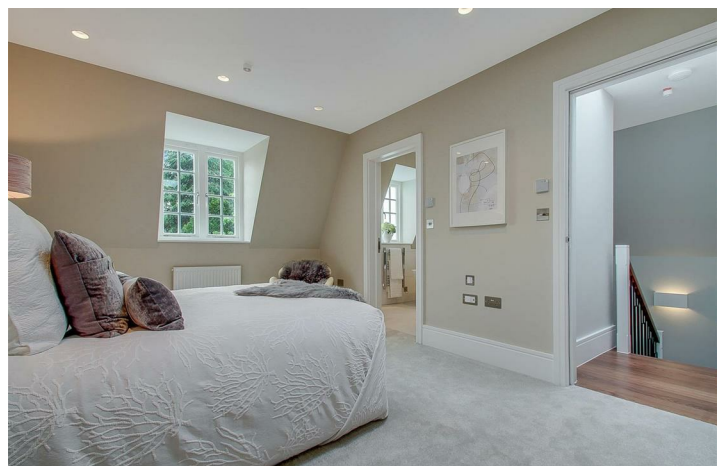
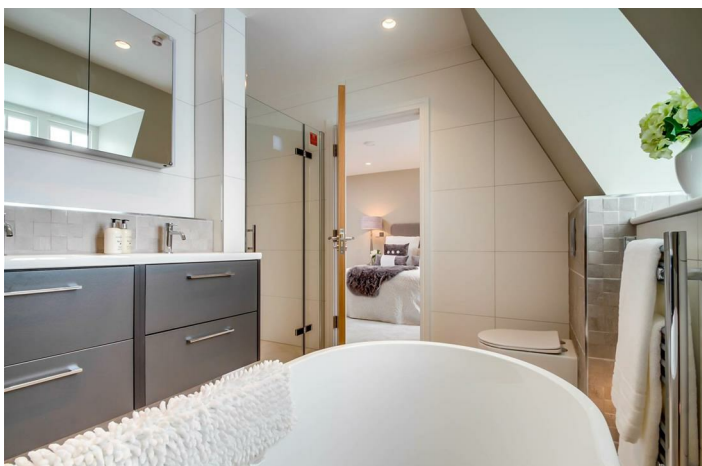
They are conveniently situated off Northway within close proximity to the shopping facilities at Market Place and approximately 0.9 mile to East Finchley underground station (Northern Line zone 3). Available 10th March:

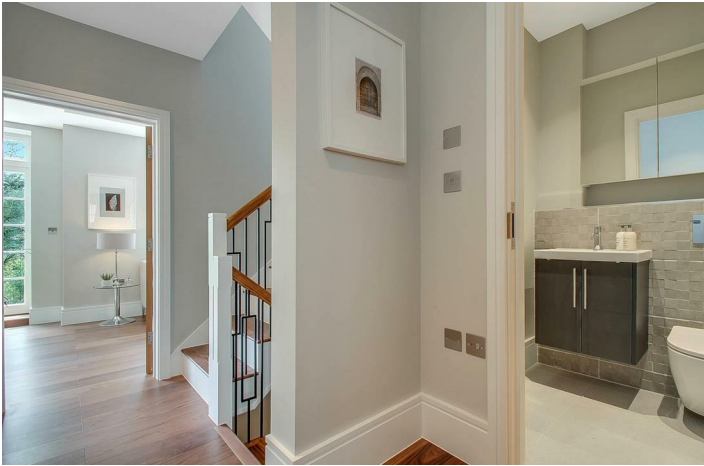
Features include:

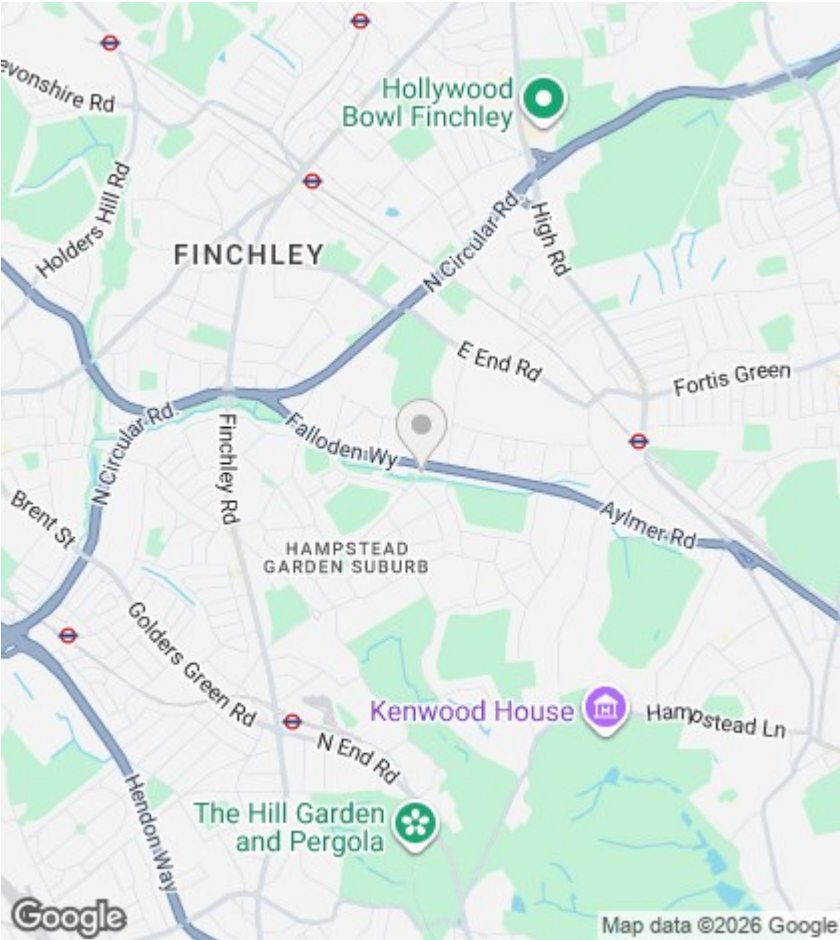
- Integrated Bosch appliances
- Main bedroom with ensuite and dressing room
- Underfloor heating
- Utility room with fitted units and separate sink
- Video entry system
- Engineered wood flooring



Council Tax Band: G







Directions

Viewings

Viewings by arrangement only. Call 020 8444 5222 to make an appointment.

EPC Rating:
C

Energy Efficiency Rating		
	Current	Potential
Very energy efficient - lower running costs		
(92 plus) A		
(81-91) B		86
(69-80) C	75	
(55-68) D		
(39-54) E		
(21-38) F		
(1-20) G		
Not energy efficient - higher running costs		
England & Wales		EU Directive 2002/91/EC